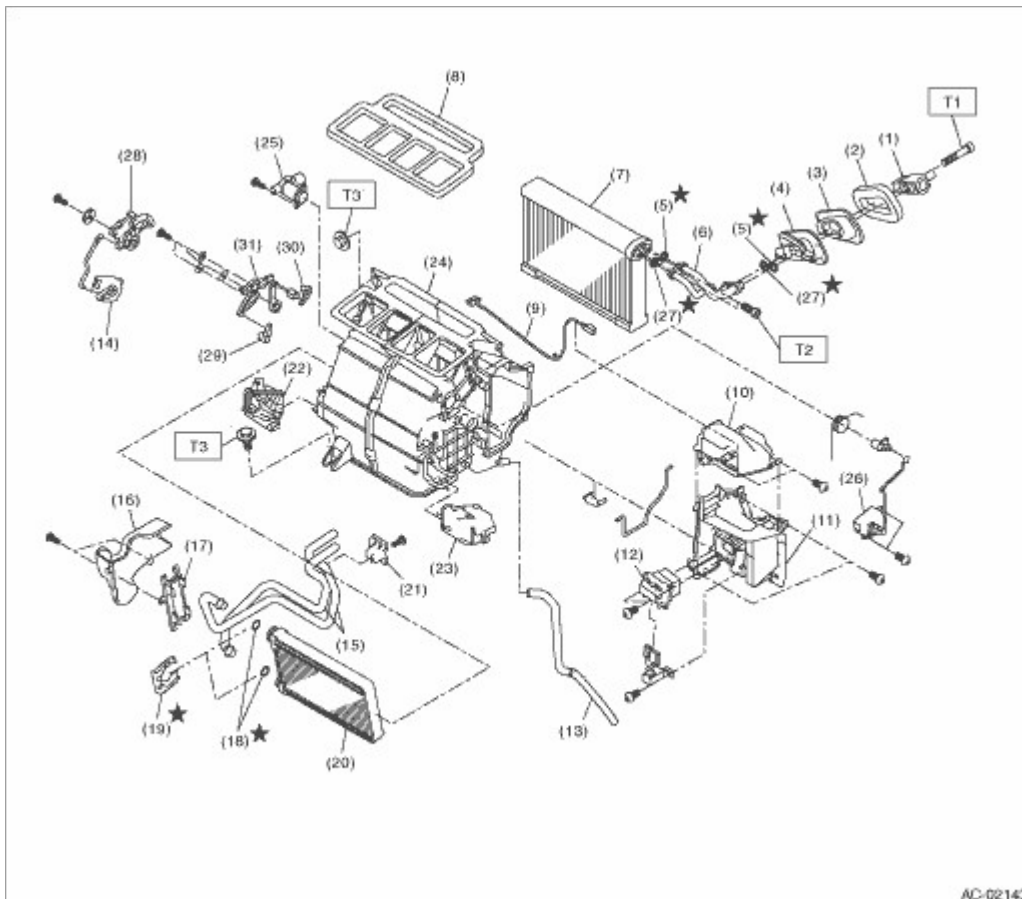


HVAC SYSTEM (HEATER, VENTILATOR AND A/C) > General Description

COMPONENT

1. HEATER COOLING UNIT

- LHD model



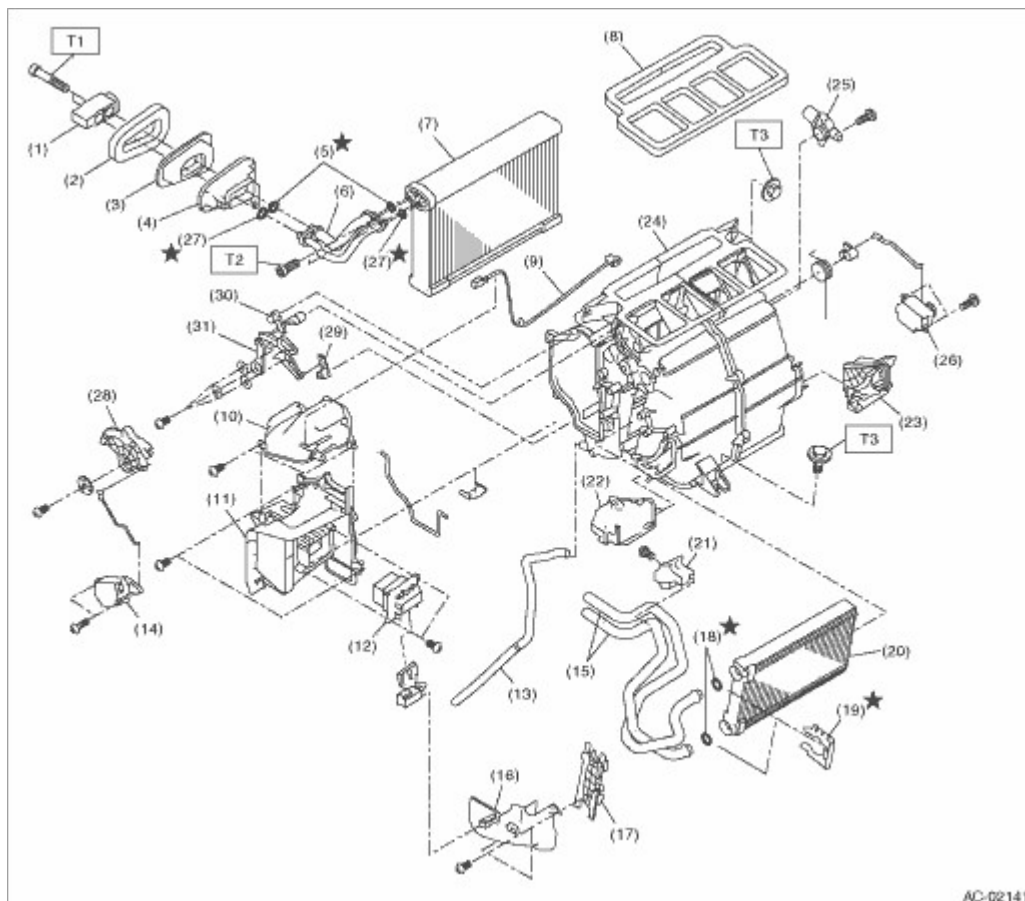
- | | | |
|----------------------------|------------------------|--|
| (1) Expansion valve | (13) Drain hose | (25) Aspirator |
| (2) Gasket | (14) Mode actuator | (26) Air mix actuator |
| (3) Grommet | (15) Heater core pipe | (27) O-ring |
| (4) Case | (16) Heater pipe cover | (28) Mode main lever |
| (5) O-ring | (17) Heater core cover | (29) Vent door link |
| (6) Evaporator pipe | (18) O-ring | (30) Defroster door link |
| (7) Evaporator | (19) Clamp | (31) Mode link |
| (8) Lining | (20) Heater core | |
| (9) Evaporator sensor | (21) Pipe clamp | |
| (10) Evaporator pipe cover | (22) Foot duct (LH) | Tightening torque: N·m (kgf·m, ft·lb) |
| (11) Evaporator cover | (23) Foot duct (RH) | T1: 5.0 (0.5, 3.7) |
| | | T2: 6.68 (0.7, 4.9) |

(12) Power transistor

(24) Heater case

T3: 7.5 (0.76, 5.5)

• RHD model



(1) Expansion valve

(13) Drain hose

(25) Aspirator

(2) Gasket

(14) Mode actuator

(26) Air mix actuator

(3) Grommet

(15) Heater core pipe

(27) O-ring

(4) Case

(16) Heater pipe cover

(28) Mode main lever cover

(5) O-ring

(17) Heater core cover

(29) Vent door link

(6) Evaporator pipe

(18) O-ring

(30) Defroster door link

(7) Evaporator

(19) Clamp

(31) Mode link

(8) Lining

(20) Heater core

(9) Evaporator sensor

(21) Pipe clamp

Tightening torque: N·m (kgf·m, ft·lb)

(10) Evaporator pipe cover

(22) Foot duct (LH)

T1: 5.0 (0.5, 3.7)

(11) Evaporator cover

(23) Foot duct (RH)

T2: 6.68 (0.7, 4.9)

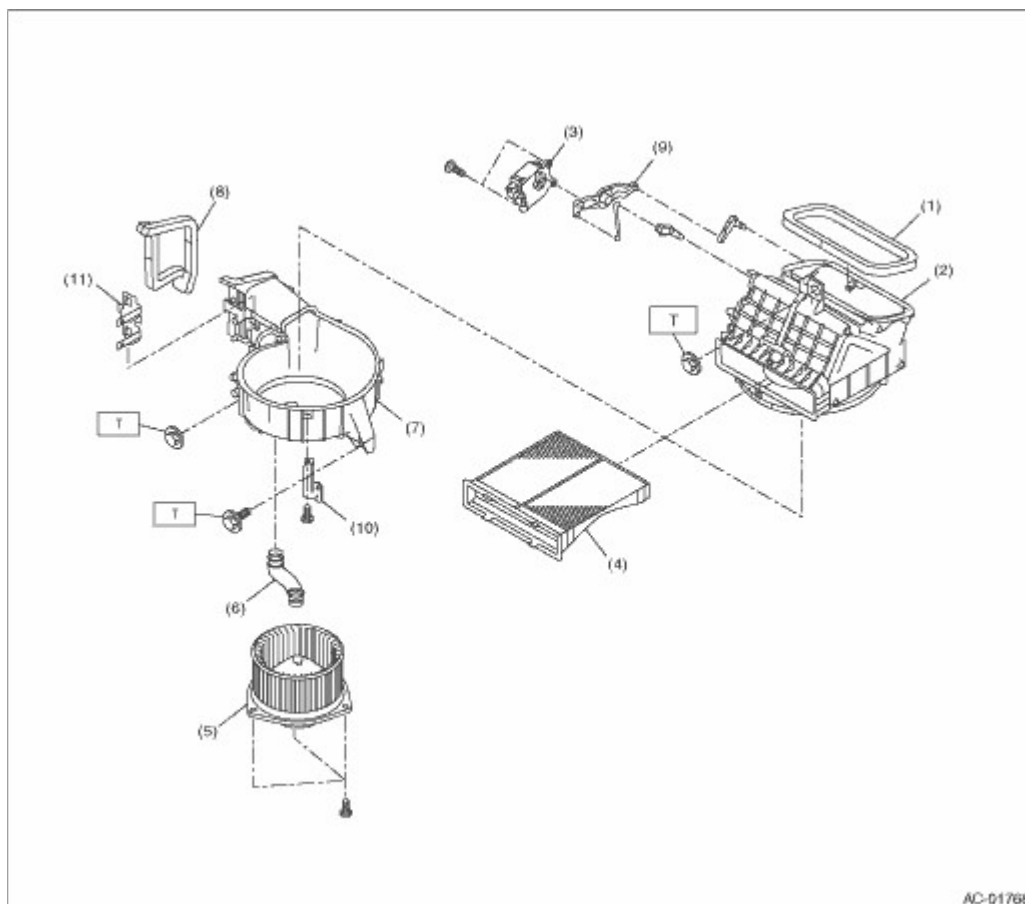
(12) Power transistor

(24) Heater case

T3: 7.5 (0.76, 5.5)

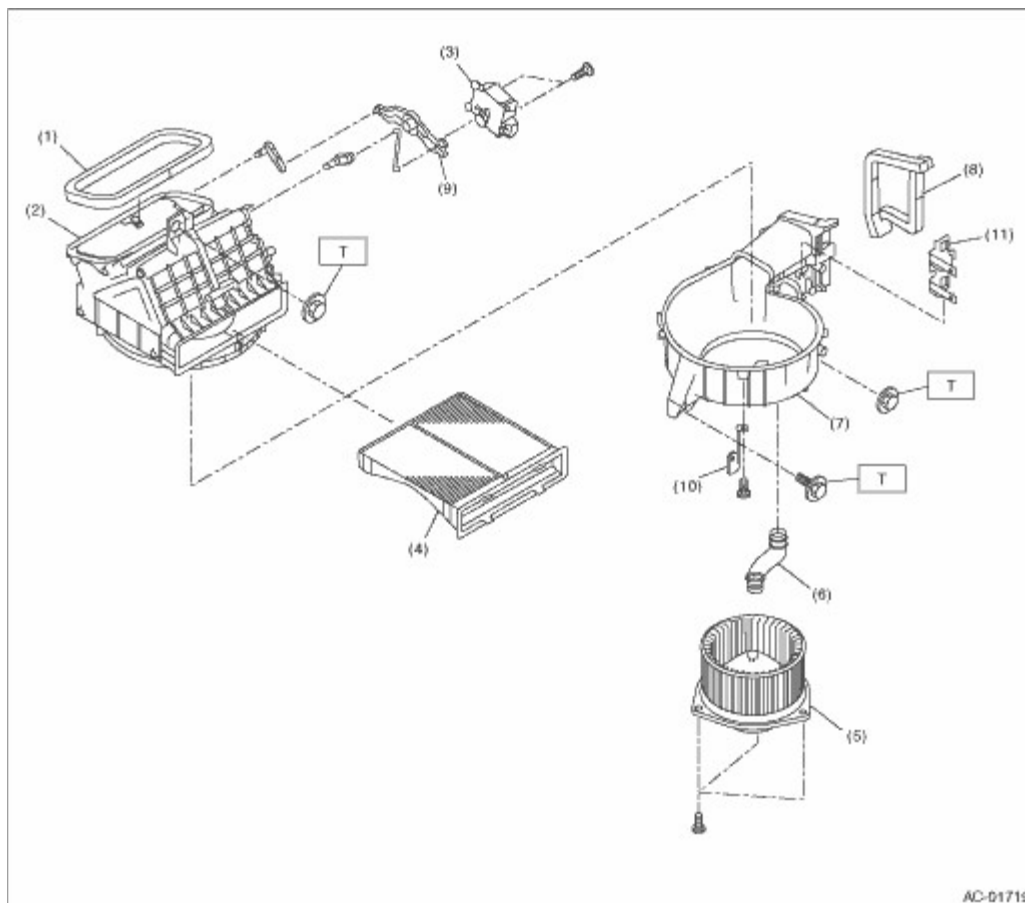
2. BLOWER MOTOR UNIT

- LHD model



- | | | |
|--------------------------|----------------------|---|
| (1) Lining | (6) Hose | (11) Relay holder bracket |
| (2) Upper case | (7) Lower case | |
| (3) Intake door actuator | (8) Lining | Tightening torque:N·m (kgf·m, ft·lb) |
| (4) Filter | (9) Intake door link | T: 7.5 (0.76, 5.5) |
| (5) Blower motor ASSY | (10) Relay bracket | |

- RHD model



(1) Lining

(2) Upper case

(3) Intake door
actuator

(4) Filter

(5) Blower motor ASSY

(6) Hose

(7) Lower case

(8) Lining

(9) Intake door
link

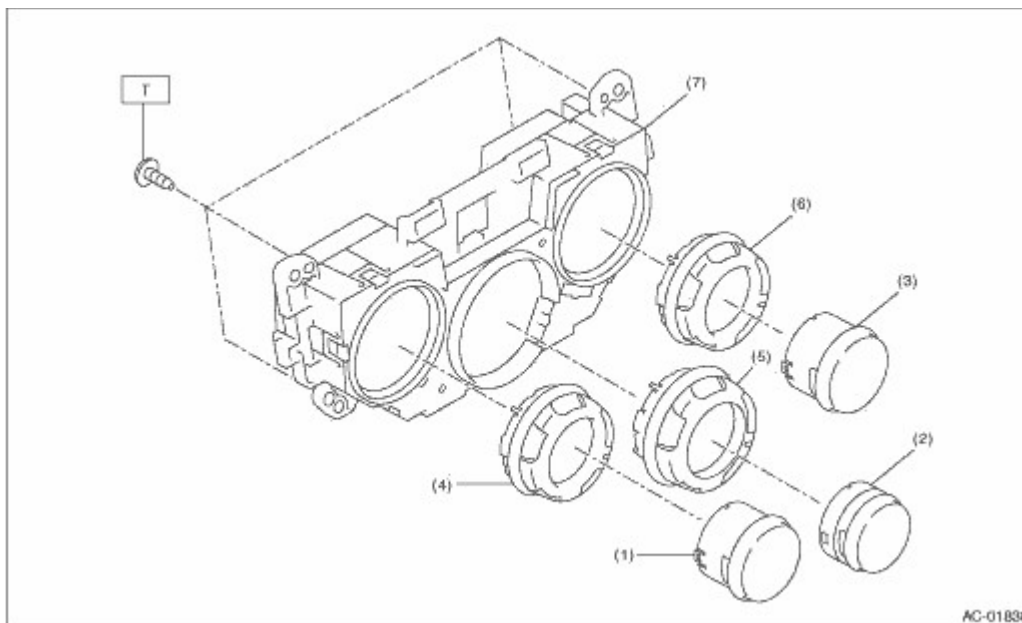
(10) Relay bracket

(11) Relay holder bracket

***Tightening torque:N·m (kgf·m, ft-
lb)***

T: 7.5 (0.76, 5.5)

3. CONTROL MODULE



- (1) FRESH/RECIRC switch
- (2) Rear defogger switch
- (3) A/C switch
- (4) Fan speed control dial

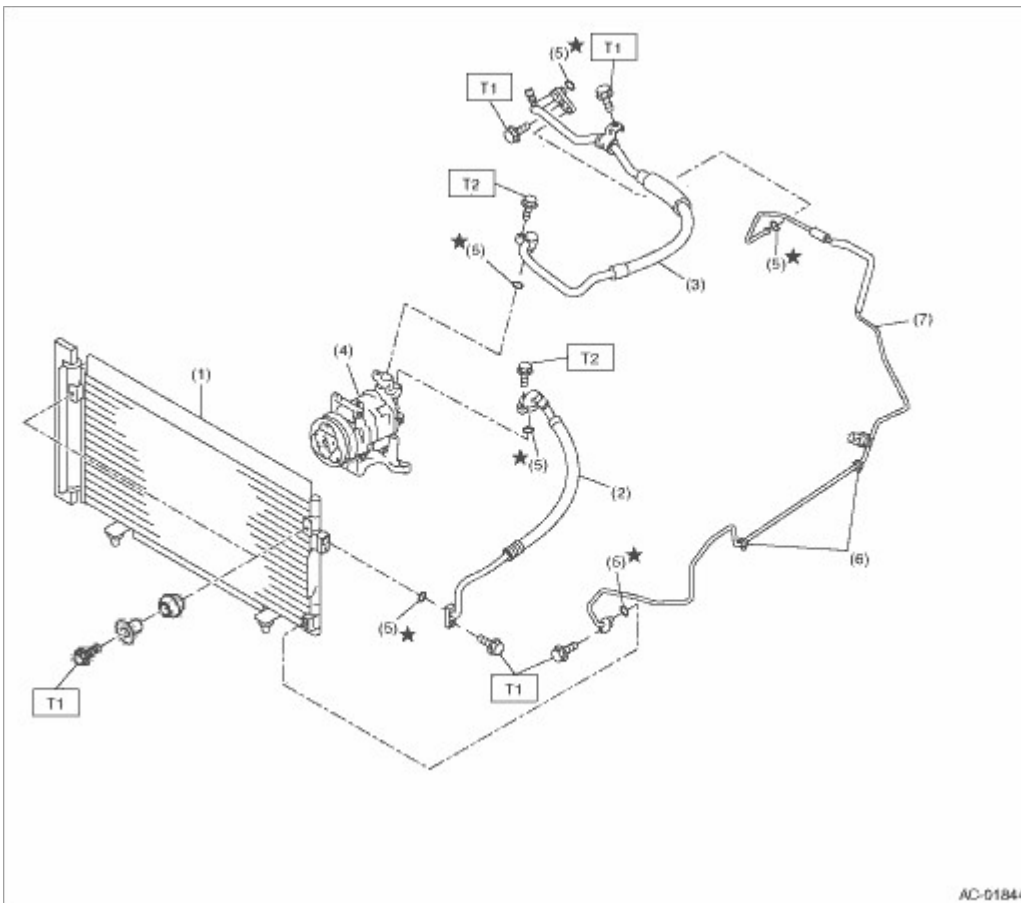
- (5) Mode control dial
- (6) Temperature control dial
- (7) Control case

Tightening torque: N·m (kgf·m, ft·lb)

T: 2 (0.2, 1.48)

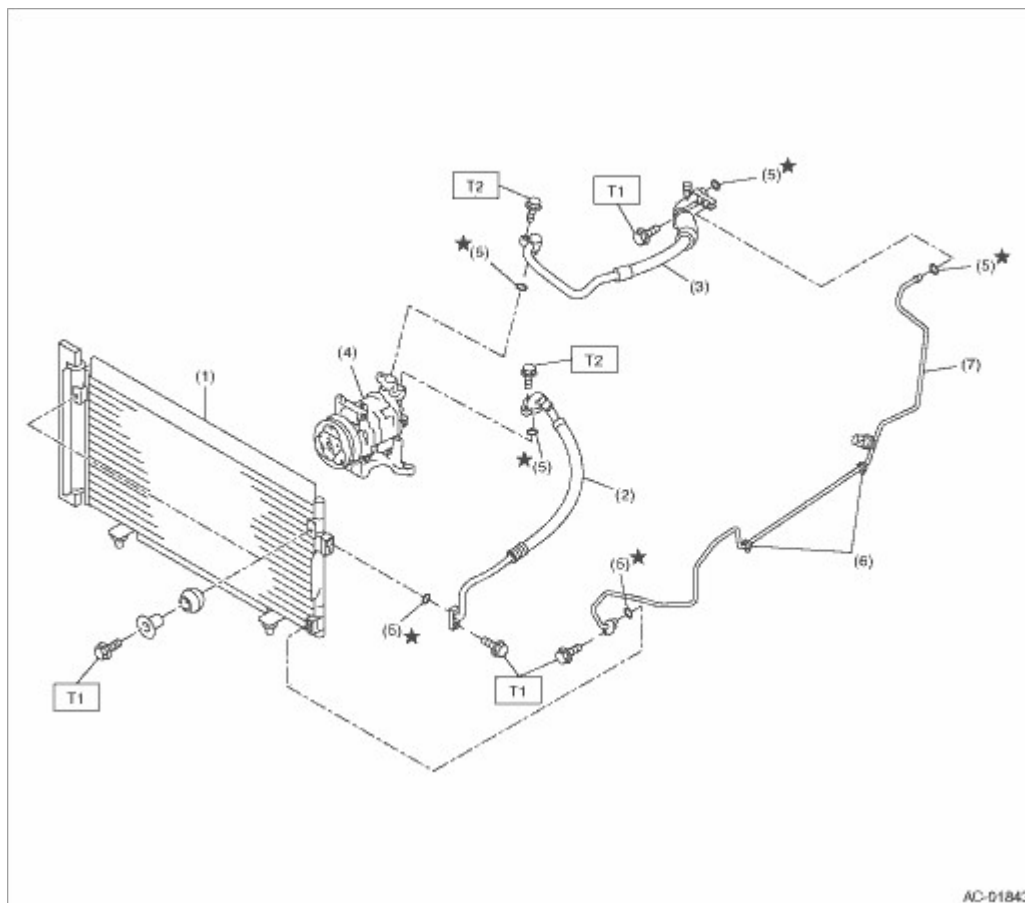
4. AIR CONDITIONING UNIT

- LHD model



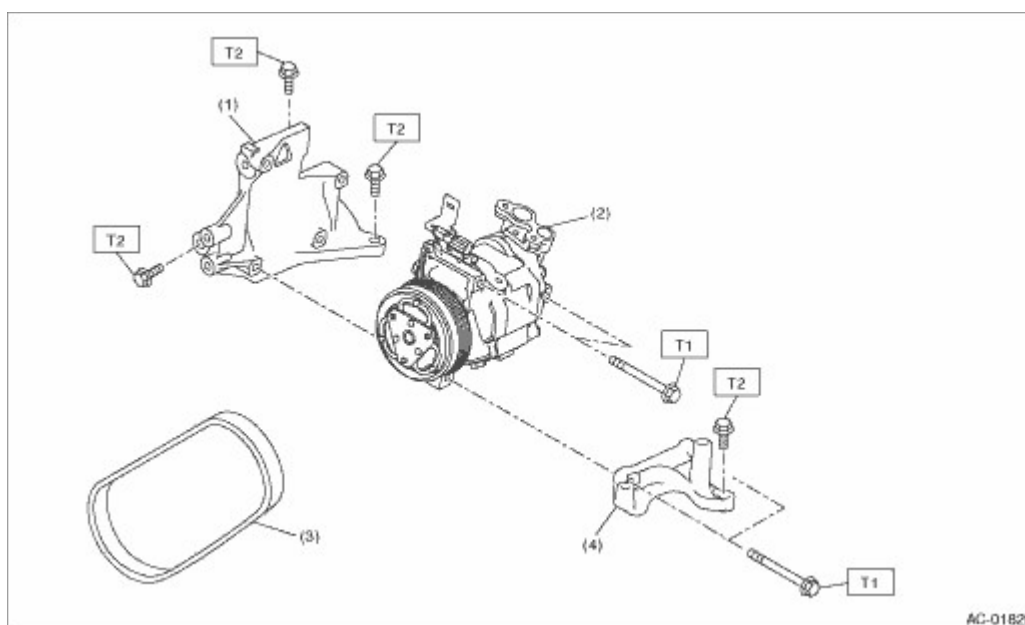
- | | | |
|--------------------------|------------|--|
| (1) Condenser | (5) O-ring | Tightening torque: N·m (kgf-m, ft-lb) |
| (2) Hose (High-pressure) | (6) Clamp | T1: 7.5 (0.76, 5.5) |
| (3) Hose (Low-pressure) | (7) Pipe | T2: 10 (1.0, 7.4) |
| (4) Compressor | | |

- RHD model



- | | | |
|--------------------------|------------|---|
| (1) Condenser | (5) O-ring | Tightening torque:N-m (kgf-m, ft-lb) |
| (2) Hose (High-pressure) | (6) Clamp | T1: 7.5 (0.76, 5.5) |
| (3) Hose (Low-pressure) | (7) Pipe | T2: 10 (1.0, 7.4) |
| (4) Compressor | | |

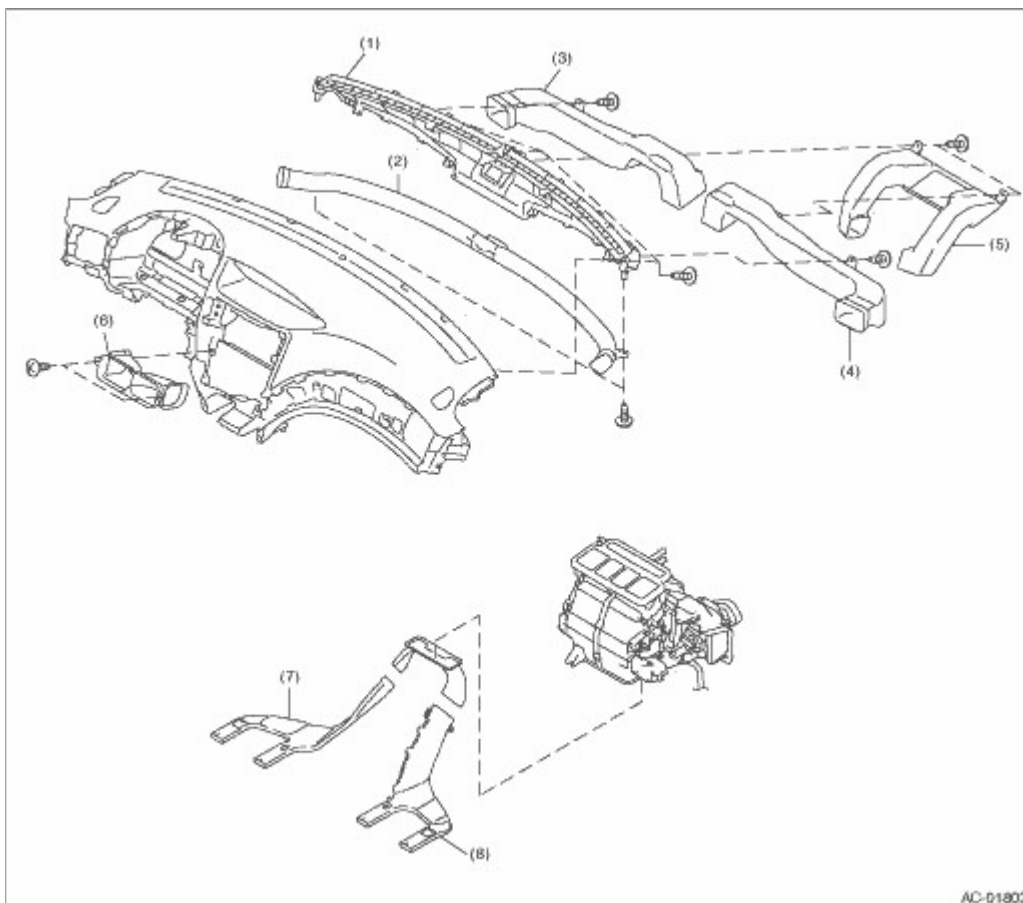
5. COMPRESSOR



- | | |
|-----|-----|
| (1) | (4) |
|-----|-----|

| | | |
|--------------------|--------------------|---|
| Compressor bracket | Compressor bracket | Tightening torque:N·m (kgf-m, ft-lb) |
| (2) Compressor | | T1: 26.5 (2.7, 19.5) |
| (3) V-belt | | T2: 36 (3.7, 26.6) |

6. HEATER DUCT



- | | | |
|--------------------------------|---------------------------------|---------------------------|
| (1) Front defroster nozzle | (4) Side ventilation duct (RH) | (7) Rear heater duct (LH) |
| (2) Side defroster duct | (5) Center ventilation duct (A) | (8) Rear heater duct (RH) |
| (3) Side ventilation duct (LH) | (6) Center ventilation duct (B) | |